

Get the Looks Featured in Mary Kay® Ads



Cynthia – Look A:

Mary Kay® Creme Lipstick: Tanned
 Mary Kay® NouriShine® Lip Gloss: Melon Sorbet
 Mary Kay® Mineral Bronzing Powder: Sandstone
 Mary Kay® Mineral Eye Color: Amber Blaze (highlight)
 Mary Kay® Mineral Eye Color: Hazelnut (midtone)
 Mary Kay® Mineral Eye Color: Chocolate Kiss (accent)
 Mary Kay® Eyeliner: Black



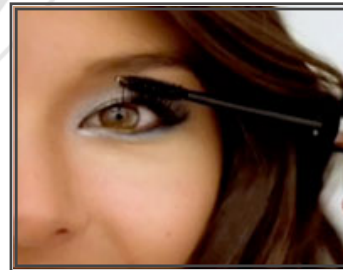
Cynthia – Look B:

Mary Kay® NouriShine® Lip Gloss: Melon Sorbet
 Mary Kay® Mineral Cheek Color: Shy Blush
 Mary Kay® Mineral Eye Color: Dusty Lilac (highlight)
 Mary Kay® Mineral Eye Color: Hazelnut (midtone)
 Mary Kay® Mineral Eye Color: Iris (accent)
 Mary Kay® Eyeliner: Amethyst
 Mary Kay® Ultimate Mascara Black



Adora

Mary Kay® Lip Liner: Cinnamon
 Mary Kay® Creme Lipstick: Nutmeg
 Mary Kay® NouriShine® Lip Gloss: Cream & Sugar
 Mary Kay® Mineral Cheek Color: Cinnamon Stick
 Mary Kay® Mineral Eye Color: Lemon Grass (highlight)
 Mary Kay® Mineral Eye Color: Cinnabar (midtone)
 Mary Kay® Mineral Eye Color: Ivy Garden (accent)
 Mary Kay® Ultimate Mascara: Black



Misa – Look A:

Mary Kay® Lip Liner: Neutral
 Mary Kay® Creme Lipstick: Tanned
 Mary Kay® NouriShine® Lip Gloss: Cream & Sugar
 Mary Kay® Mineral Cheek Color: Shy Blush
 Mary Kay® Mineral Eye Color: Blue Metal (highlight)
 Mary Kay® Mineral Eye Color: Denim Frost (midtone)
 Mary Kay® Mineral Eye Color: Navy Blue (accent)
 Mary Kay® Eyeliner: Navy
 Mary Kay® Ultimate Mascara: Black



Misa – Look B:

Mary Kay® Lip Liner: Pink/Raspberry
 Mary Kay® Creme Lipstick: Paradise Pink/Black Cherry (layered)
 Mary Kay® NouriShine® Lip Gloss: Gold Rush/Berry Sparkle (layered)
 Mary Kay® Mineral Cheek Color: Shy Blush
 Mary Kay® Mineral Eye Color: Honey Spice (highlight)
 Mary Kay® Mineral Eye Color: Hazelnut (midtone)
 Mary Kay® Mineral Eye Color: Sweet Plum (accent)
 Mary Kay® Eyeliner: Deep Brown
 Mary Kay® Ultimate Mascara: Black



Bianca – Look A:

Mary Kay® Lip Liner: Neutral
 Mary Kay® Creme Lipstick: Tanned
 Mary Kay® NouriShine® Lip Gloss: Cream & Sugar
 Mary Kay® Mineral Cheek Color: Cinnamon Stick
 Mary Kay® Mineral Eye Color: Sweet Cream (highlight)
 Mary Kay® Mineral Eye Color: Sienna (midtone)
 Mary Kay® Mineral Eye Color: Steel (accent)
 Mary Kay® Ultimate Mascara: Black



Bianca – Look B:

Mary Kay® Lip Liner: Neutral
 Mary Kay® Creme Lipstick: Sweet Nectar
 Mary Kay® NouriShine® Lip Gloss: Melon Sorbet
 Mary Kay® Mineral Bronzing Powder: Sandstone
 Mary Kay® Mineral Eye Color: Lemongrass (highlight)/Precious Pink (browbone)
 Mary Kay® Mineral Eye Color: Hazelnut (midtone)
 Mary Kay® Mineral Eye Color: Iris (accent)
 Mary Kay® Ultimate Mascara: Black